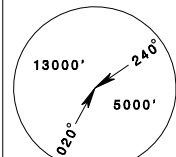
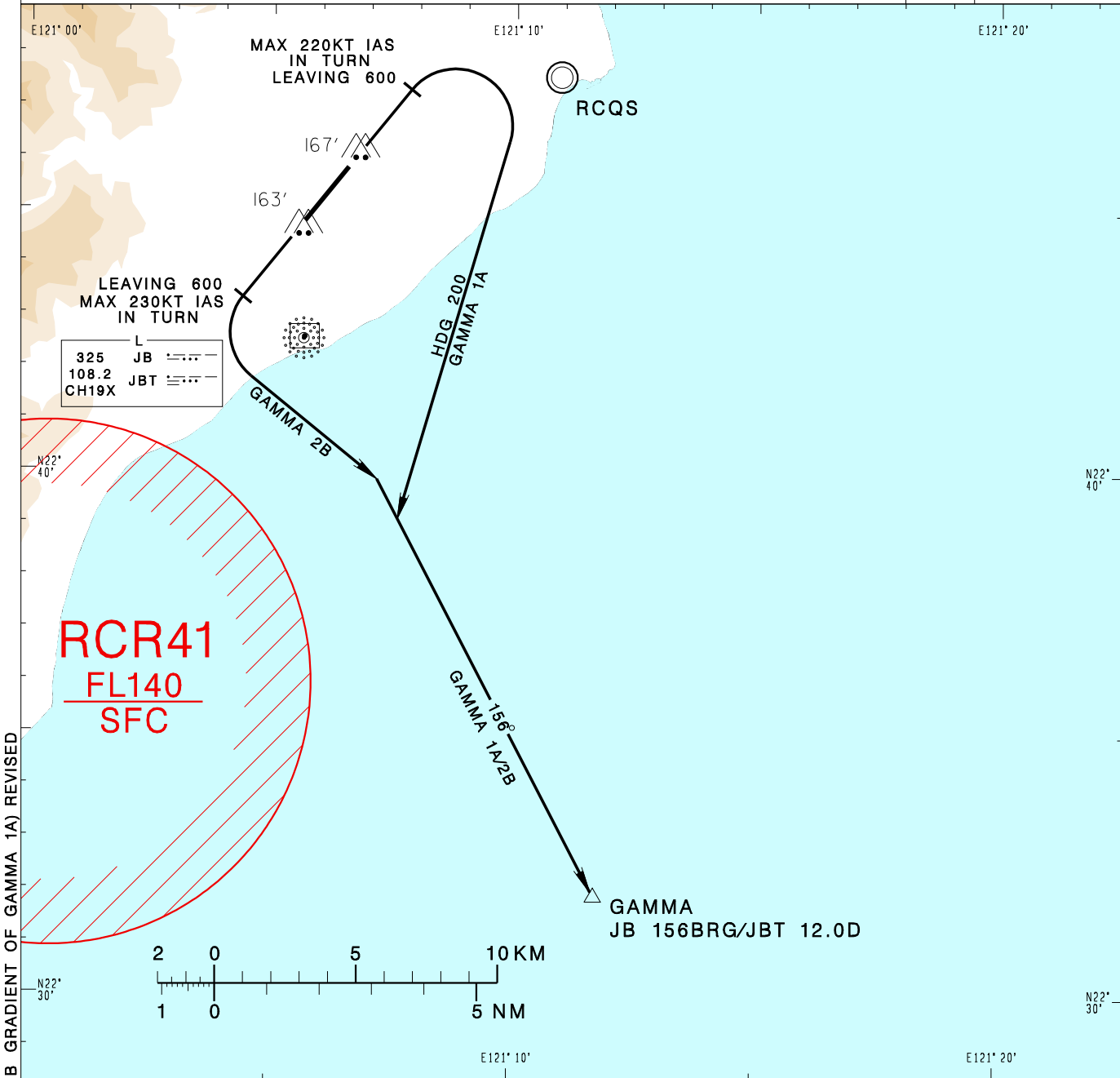


臺東/豐年機場
TAITUNG/FONGNIAN AD

RCFN SID
GAMMA 1A (RWY04)
GAMMA 2B (RWY22)

KAOSHIUNG APP 119.4 228.2	FONGNIAN TWR 118.1 236.6	ATIS 127.0	VAR 4° W-2023 
Apt Elev: 143'		Trans Level: FL130	
BEARINGS ARE MAGNETIC; DISTANCES ARE NAUTICAL MILES; ELEVATIONS, HEIGHTS IN FEET			



CHANGES: NOTE 1 (REQUIRED CLIMB GRADIENT OF GAMMA 1A) REVISED

<p>GAMMA ONE ALFA DEPARTURE Depart RWY HDG until 600ft, turn right HDG 200 to track JB 156BRG to GAMMA to join V14 transition.</p>	<p>NOTE</p> <ol style="list-style-type: none"> GAMMA 1A : Requires a minimum climb gradient of 5.0%(304 ft/NM) until 2000ft. GAMMA 2B : Requires a minimum climb gradient of 3.5%(213 ft/NM) until established on JB 156BRG. Caution close-in obstacles (trees & poles): 167ft MSL, 96m northeast of RWY22 THR & 163ft MSL, 69m south of RWY04 THR. High terrain around the airport.
<p>GAMMA TWO BRAVO DEPARTURE Depart RWY HDG until 600ft, turn left to track JB 156BRG to GAMMA to join V14 transition.</p>	